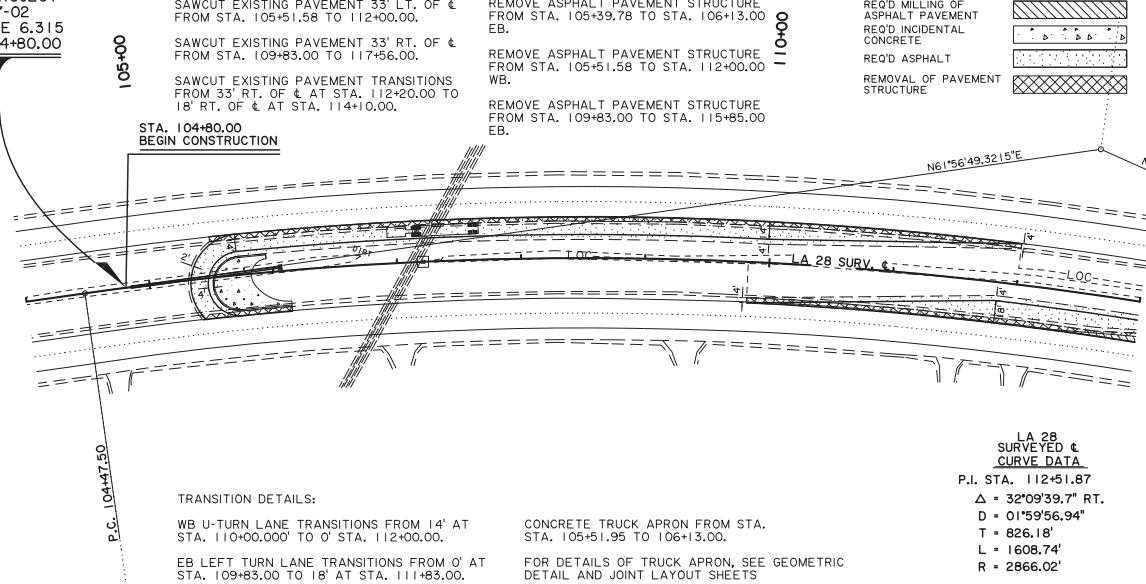


LEGEND - EXISTING TOPOGRAPHY

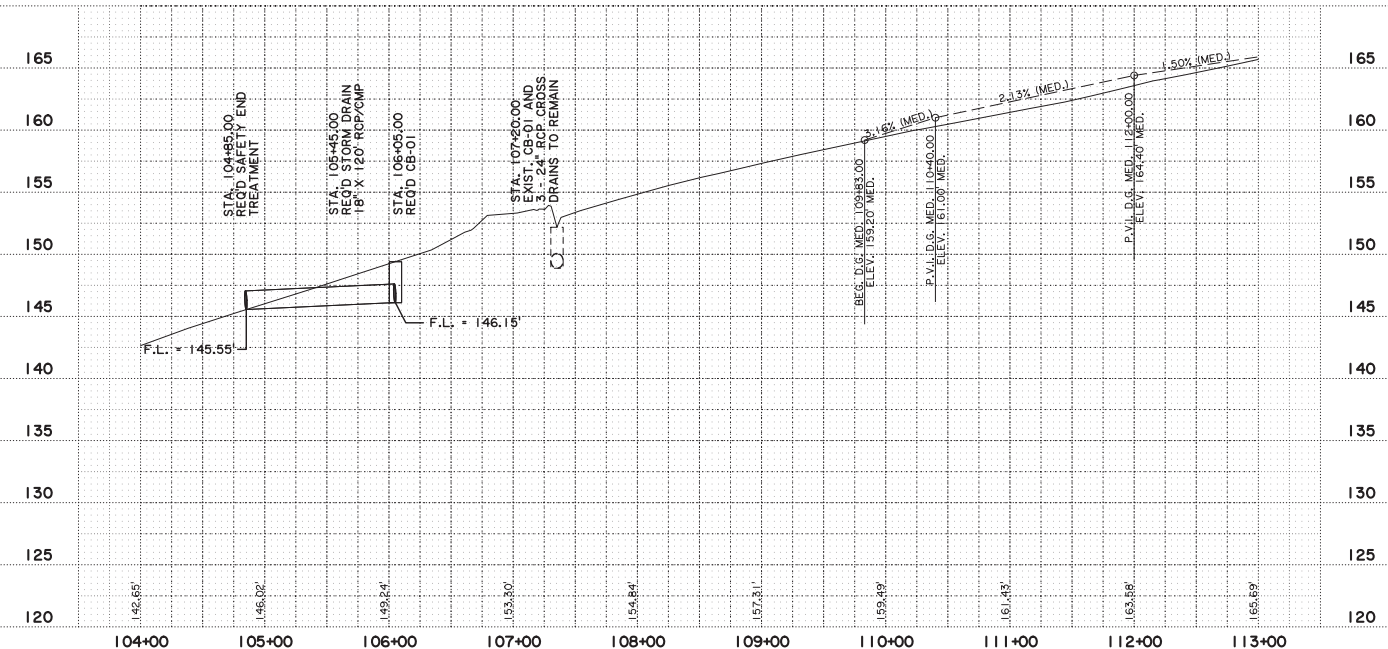
CONTROL POINT	GAS LINE	SEWER MANHOLE TOP
TEMPORARY BENCH MARK	GAS METER	SEWER BLOWOUT VALVE
PHOTO TARGET	GAS REGULATOR	SEWER CLEANOUT
PAVEMENT EDGE	GAS RISER	SEPTIC TANK
SHOULDER EDGE	GAS TEST BOX	SEWER PUMP (PRIVATE)
SLOPE TOP	GAS VALVE	SEWER TREATMENT (INDIVIDUAL)
GAUGE/RAIL TOP	GAS LINE/CASING	FEDERAL AID MARKER
HIGH BANK	GAS VENT	TRAFFIC CONTROLLER BOX
WATERS EDGE	RAILROAD MILEPOST	TRAFFIC SIGNAL
HIGH WATER MARK	RAILROAD SIGNAL	TRAFFIC SIGNAL SUPPORT POLE
BOX CULVERT	RAILROAD SWITCH	LIGHT POLE
PIPE CULVERT	RAILROAD TRACK	LIGHT PEDestal
CATCH BASIN TOP (GROUND)	RR TRAFFIC SIGNAL BOX	LIGHT POWER VAULT
DROP INLET TOP (GROUND)	SEWER LINE	TRAFFIC SIGN
DRAINAGE MANHOLE TOP	SEWER MANHOLE TOP	PARKING METER
LEVEE TOP	SEWER BLOWOUT VALVE	TELEPHONE POLE
DITCH CENTERLINE	SEWER CLEANOUT	TELEPHONE LINE
TREE	SEPTIC TANK	TELE CROSS CONNECT BOX
WOODS EDGE	SEWER PUMP (PRIVATE)	TELEPHONE PEDestal
MARSH LINE	SEWER TREATMENT (INDIVIDUAL)	TELEPHONE PRESSURE BOX
SWAMP LINE	FEDERAL AID MARKER	WATER LINE
TREE CLUSTER	TRAFFIC CONTROLLER BOX	WATER LINE/CASING
HEDGE	TRAFFIC SIGNAL	WATER CLEANOUT
BUSH	TRAFFIC SIGNAL SUPPORT POLE	WATER METER
TREE LINE	LIGHT POLE	WATER VALVE VAULT
FENCE LINE	LIGHT PEDestal	WATER WELL
GATE	LIGHT POWER VAULT	FIRE HYDRANT
CATTLE GUARD	TRAFFIC SIGN	BELLEHARD
PROPERTY CORNER	PARKING METER	FUEL PUMP
RIGHT OF WAY MONUMENT	TELEPHONE POLE	POST
SECTION CORNER	TELEPHONE LINE	SHUN POST
FENCE CORNER	TELE CROSS CONNECT BOX	STORAGE TANK (ROUND)
TELEVISION CABLE	TELEPHONE PEDestal	GRAVE
TELEVISION PEDestal	TELEPHONE PRESSURE BOX	MALIBOX
POWER POLE	WATER LINE	ORNSMENTAL LIGHT
DEADMAN	WATER LINE/CASING	FLAG POLE
POWER LINE	WATER CLEANOUT	GRAVE
POWER FUNCTION BOX	WATER METER	
POWER VAULT	WATER VALVE VAULT	
TRANSFORMER	WATER WELL	
COMBINATION POLE	FIRE HYDRANT	
POWER DROP	BELLEHARD	
PIPELINE	FUEL PUMP	
PIPELINE VENT	POST	
PIPELINE REGULATOR	SHUN POST	
GAS WELL	STORAGE TANK (ROUND)	
HAY BALES	GRAVE	
SILT FENCE	MALIBOX	
INLET SILT TRAP	ORNSMENTAL LIGHT	
	FLAG POLE	
	GRAVE	

BEGIN PROJECT
C.S. 417-02
LOG MILE 6.315
STA. 104+80.00



LA 28 SURVEY & CURVE DATA
P.I. STA. 112+51.87
 $\Delta = 32^{\circ}09'39.7''$ RT.
D = 01'59'56.94"
T = 826.18'
L = 1608.74'
R = 2866.02'

UTILITY COMPANIES		
UTILITY	UTILITY OWNER	CONTACT NUMBER
ELECTRIC		XXX-XXX-XXXX
ELECTRIC		XXX-XXX-XXXX
COMMUNICATIONS		XXX-XXX-XXXX
COMMUNICATIONS		XXX-XXX-XXXX
COMMUNICATIONS		XXX-XXX-XXXX
WATER		XXX-XXX-XXXX



SHEET NUMBER	4
PARISH	RAPIDES
CONTROL SECTION	417-02
DATE	H-015266
DESIGN	J. RACHAL
CHECK	J. LACHNEY
DETAIL	J. FIDUA
CHECK	J. RACHAL
REVIEW	J. RACHAL
SHEETS	1 OF 3

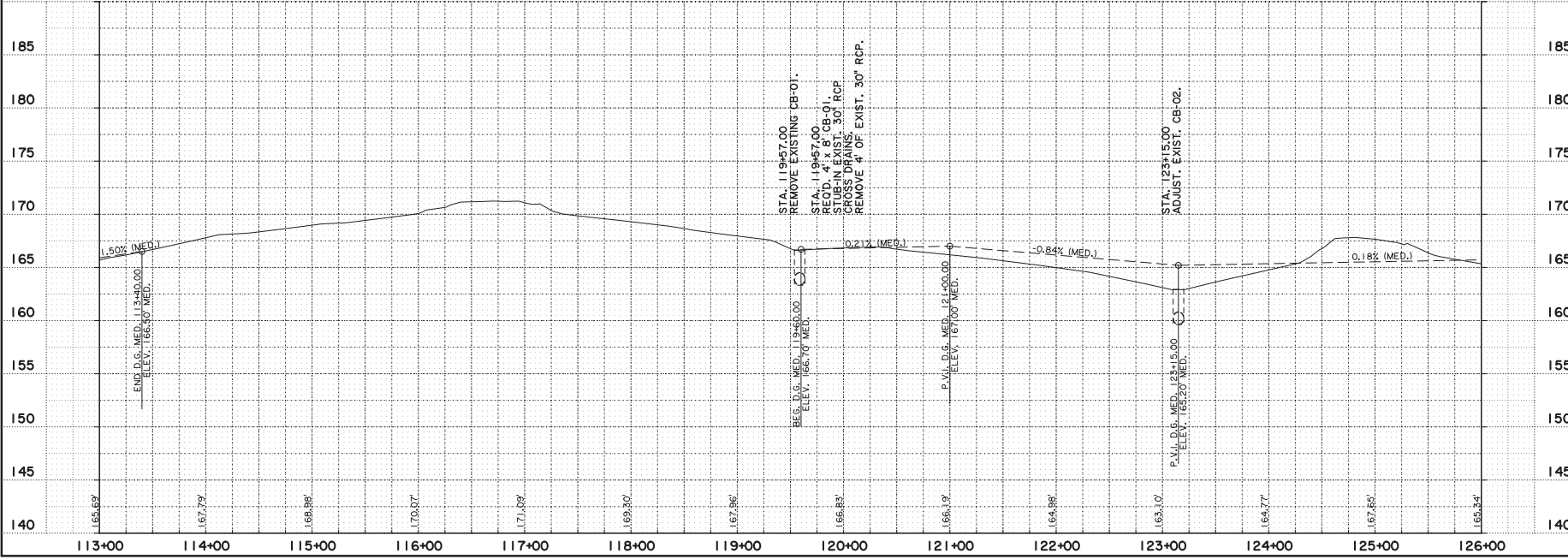
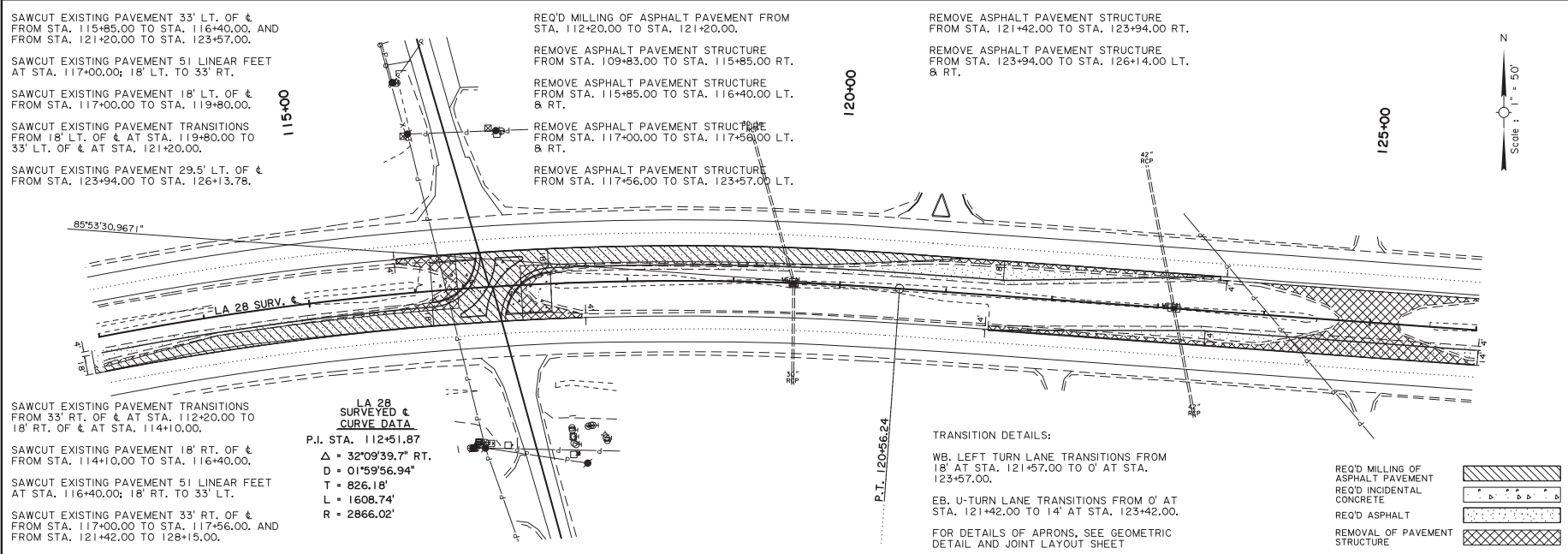
90% PRELIMINARY PLAN
PRELIMINARY NOT FOR CONSTRUCTION
ENGINEER:
Jason G. Rachal
LICENSE #:
30920
DATE:
4/27/2023

NO.	DATE	REVISION OR CHANGE ORDER DESCRIPTION

LA 28: R. CUT AT ST. CLAIR RD.

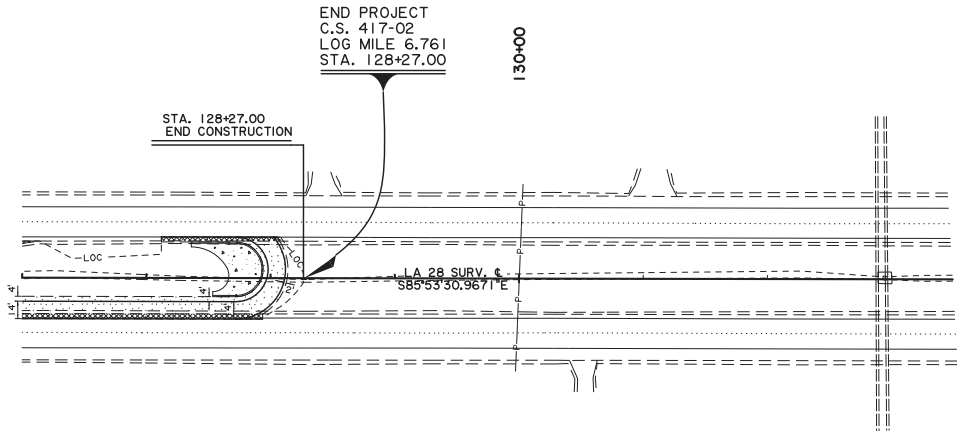
PLAN AND PROFILE SHEET

DOT
LOUISIANA DEPARTMENT OF TRANSPORTATION & INFRASTRUCTURE
DIST 08
DESIGN



SHEET NUMBER		5	
PARISH		RAPIDES	
CONTROL SECTION		417-02	
DATE		H-015266	
DESIGN	J. RACHAL	DESIGN	J. RACHAL
CHECK	J. LACHNEY	DETAIL	J. FLOQUA
REVISION		CHECK	J. RACHAL
		REVIEW	
SHEET 2 OF 3			
90% PRELIMINARY PLAN			
PRELIMINARY NOT FOR CONSTRUCTION			
ENGINEER: Jason G. Rachal			
LICENSE #: 30920			
DATE: 4/27/2023			
NO.	DATE	REVISION OR CHANGE	DESCRIPTION
PLAN AND PROFILE SHEET			
LA 28 - R CUT AT ST. CLAIR RD.			
DIST 08 DESIGN			

90% PRELIMINARY PLANS



FOR DETAILS OF TRUCK APRON, SEE GEOMETRIC DETAIL AND TRUCK LAYOUT SHEETS.

REMOVE ASPHALT PAVEMENT STRUCTURE FROM STA. 123+94.00 TO STA. 126+14.00 LT. & RT.

REMOVE ASPHALT PAVEMENT STRUCTURE FROM STA. 126+14.00 TO STA. 127+93.63 RT.

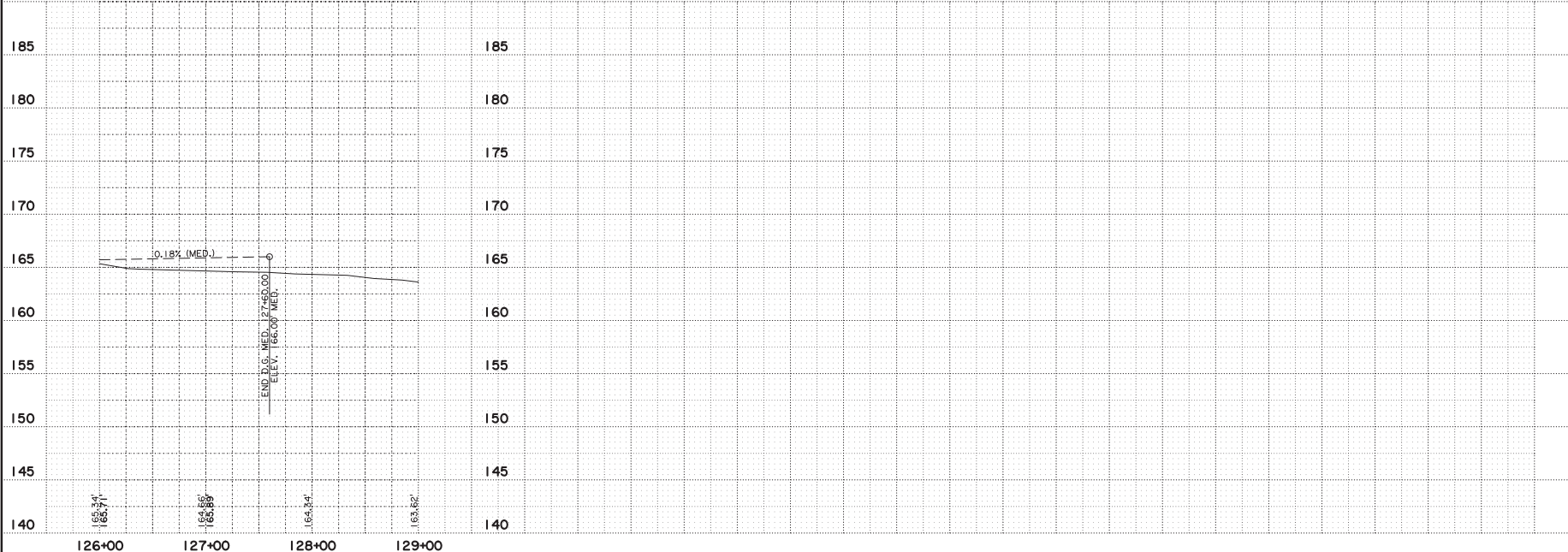
REMOVE ASPHALT PAVEMENT STRUCTURE FROM STA. 127+12.00 TO STA. 128+07.78 LT.

SAWCUT EXISTING PAVEMENT 29.5' LT. OF \pm FROM STA. 123+94.00 TO STA. 126+13.78.

SAWCUT EXISTING PAVEMENT 33' LT. OF \pm FROM STA. 127+12.00 TO 128+07.78.

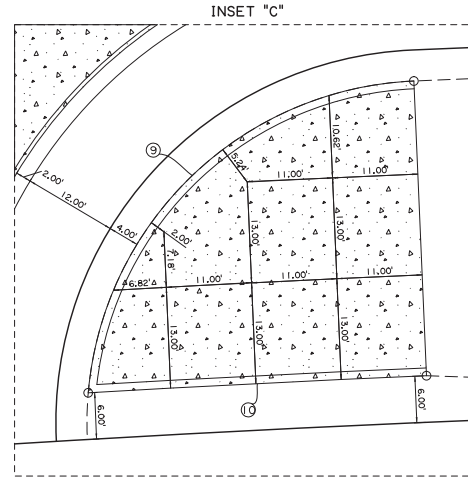
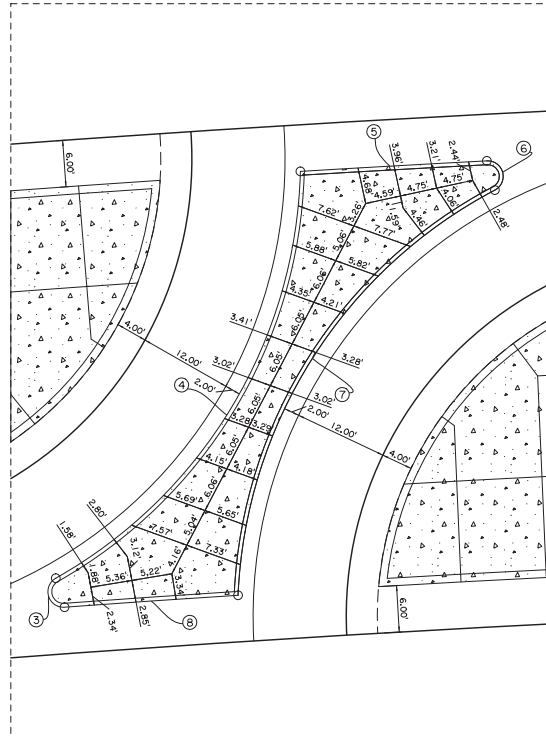
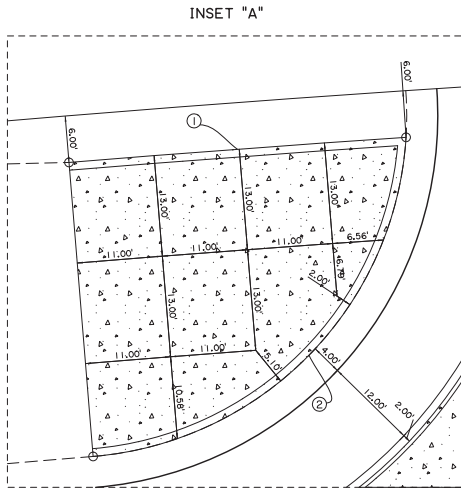
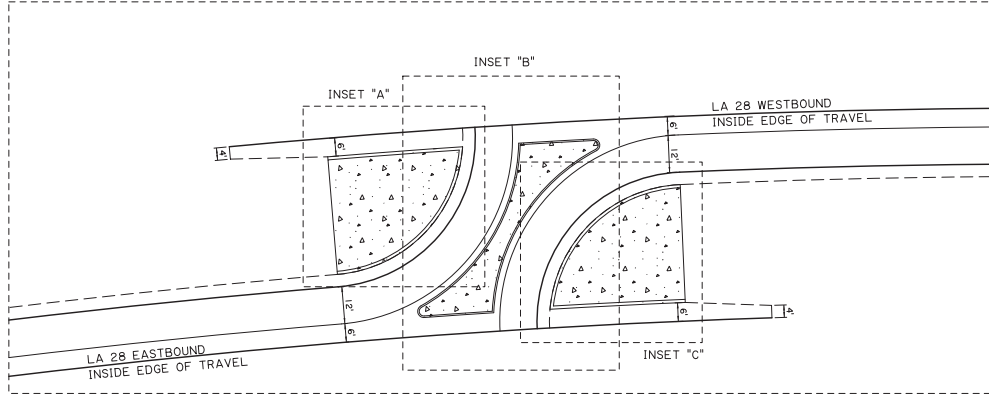
SAWCUT EXISTING PAVEMENT 33' RT. OF \pm FROM STA. 121+42.00 TO 127+93.63.

- REQ'D MILLING OF ASPHALT PAVEMENT
- REQ'D INCIDENTAL CONCRETE
- REQ'D ASPHALT
- REMOVAL OF PAVEMENT STRUCTURE

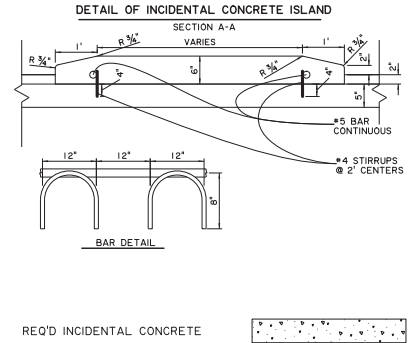


DESIGN	CHECK	DETAIL	CHECK	REVIEW	SHEET NUMBER	6
J. RACHAL	J. LACHRY	J. FLUQUA	J. RACHAL		RAPIDES	
					CONTROL SECTION	417-02
					STATE PROJECT	H-015266
					REVISION OR CHANGE	OF 3
					NO.	DATE
					REVISION OR CHANGE	
					PLAN AND PROFILE SHEET LA 28-R CUT AT ST CLAIR RD	
					DIST 08 DESIGN	

90% PRELIMINARY PLANS



CURVE	BEG. ORDINATE		END ORDINATE		R	Δ
	STA	OFFSET	STA	OFFSET		
1	116+16.00	27.00' L	116+59.14	27.00' L	2,893.02'	0.863
2	116+16.00	11.00' R	116+59.14	27.00' L	44.00'	81.732
3	116+43.02	27.00' R	116+42.16	23.16' R	2.00'	-154.721
4	116+42.16	23.19' R	116+77.07	27.00' L	62.00'	59.097
5	116+77.07	27.00' L	117+00.91	27.00' L	2,893.02'	0.476
6	117+00.91	27.00' L	117+01.74	23.18' L	2.00'	-155.262
7	117+01.74	27.00' R	116+65.65	23.18' L	62.00'	59.790
8	116+65.65	27.00' L	116+43.02	27.00' R	2,839.02'	0.452
9	116+63.95	27.00' R	117+28.00	11.00' L	44.00'	82.603
10	116+63.95	27.00' R	117+28.00	27.00' R	2.50'	0.881



DESIGN	J. RACHAL	PARISH	RAPIDES	SHEET NUMBER	9
CHECK	J. LACHNEY	CONTROL SECTION	417-02	PROJECT	H-015266
DETAIL	J. FLUQUA	REVIEW	417-02		
CHECK	J. RACHAL				
REVISION					
DATE					
REVISION OR CHANGE					
DESCRIPTION					

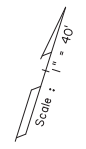
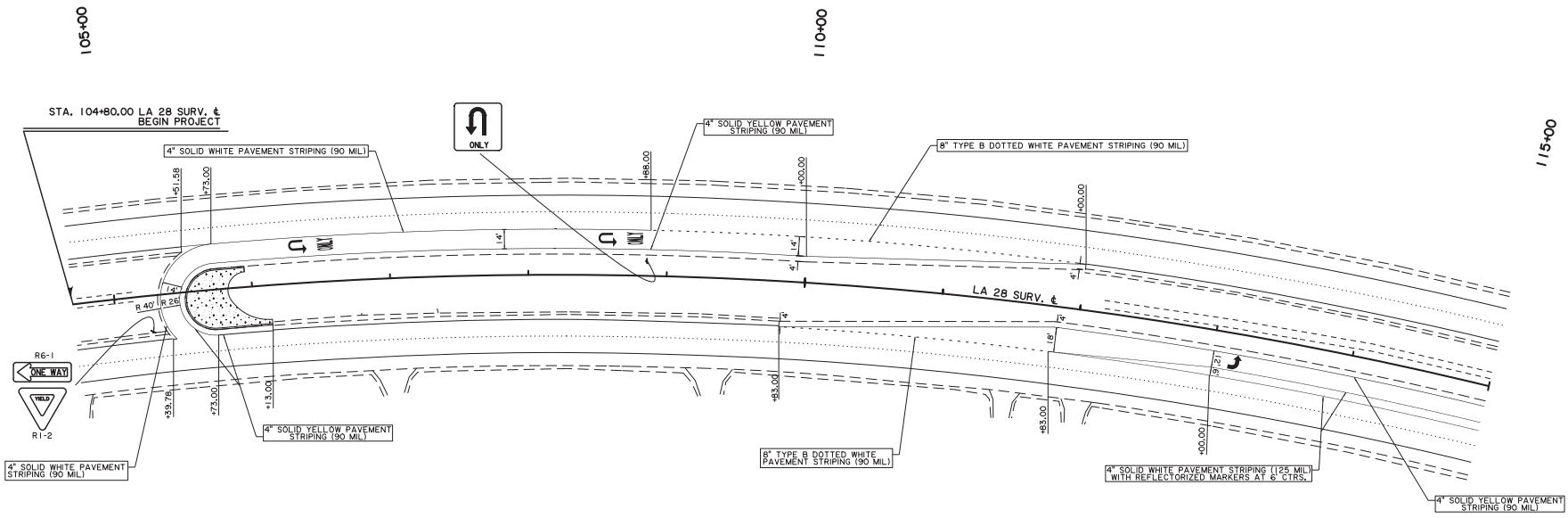
90% PRELIMINARY PLANS
PRELIMINARY NOT FOR CONSTRUCTION
 ENGINEER: Jason G. Rachal
 LICENSE #: 30920
 DATE: 4/27/2023

LA 28: R-CUT AT ST. CLAIR RD.

DOT
 LOUISIANA DEPARTMENT OF TRANSPORTATION & INFRASTRUCTURE

DIST 08
 DESIGN

90% PRELIMINARY PLANS
 90% PRELIMINARY PLANS
 Pavement Markings Detail.dgn



PERMANENT SIGNING

SIGN CATALOG NUMBER	DESCRIPTION	SIZE
R5-1	DO NOT ENTER	30"X30"
R1-2	YIELD	36"X48"X36"
U-1	U-TURN ONLY	24"X24"
R6-1	ONE WAY	54"X18"

DESIGN	J. RACHAL	PARISH	RAPIDES	SHEET NUMBER	10
CHECK	J. LACHNEY	CONTROL SECTION	417-02		
DETAIL	J. FLUQUA	PROJECT	H-015266		
CHECK	J. RACHAL				
REVISIONS	1 OF 3				

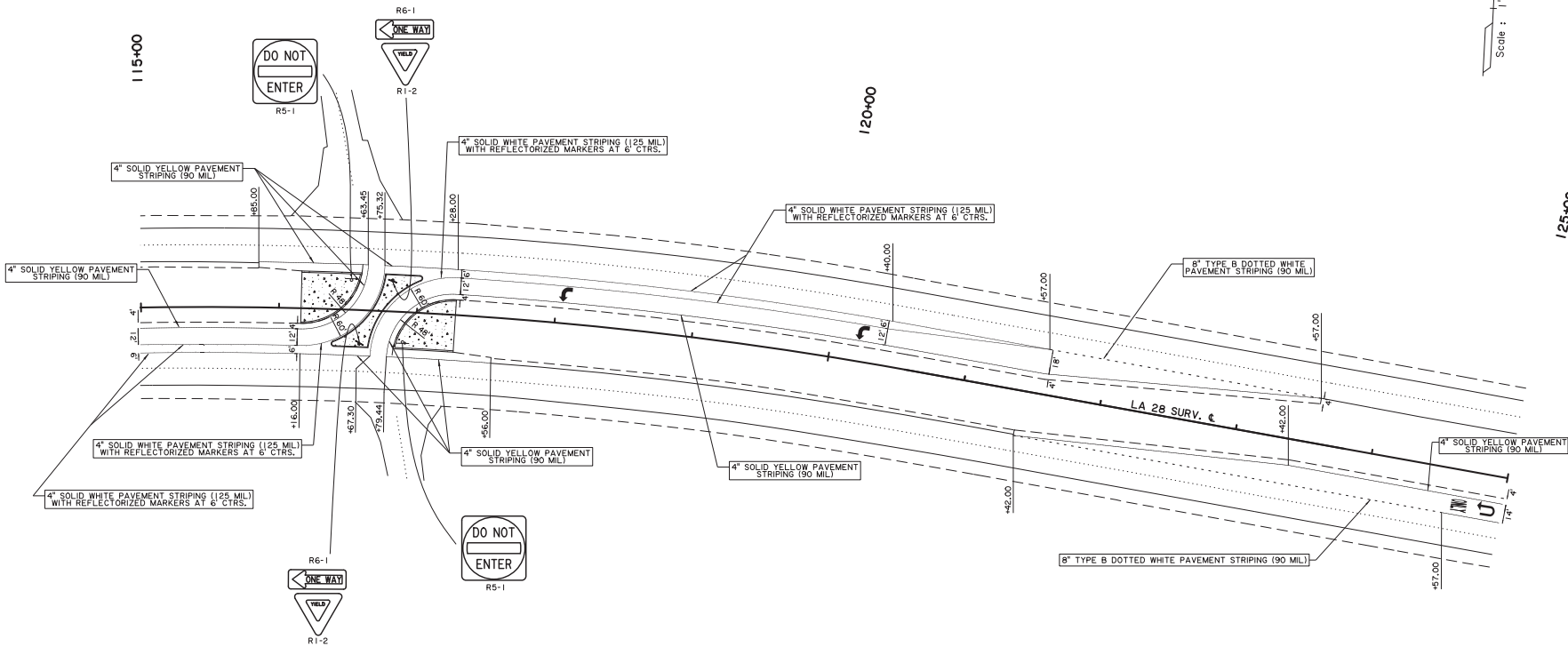
90% PRELIMINARY PLANS
PRELIMINARY
 NOT FOR CONSTRUCTION
 ENGINEER:
 Jason G. Rachal
 LICENSE #: 30920
 DATE: 4/27/2023

NO.	DATE	REVISION OR CHANGE ORDER DESCRIPTION

PAVEMENT MARKING LAYOUT SHEETS

LA 28: R-CUT AT ST. CLAIR RD.

DOT
 LOUISIANA DEPARTMENT OF TRANSPORTATION & INFRASTRUCTURE
 DIST 08 DESIGN



PERMANENT SIGNING

SIGN CATALOG NUMBER	DESCRIPTION	SIZE
R5-1	DO NOT ENTER	30"X30"
R1-2	YIELD	36"X36"X36"
-	U-TURN ONLY	24"X24"
R6-1	ONE WAY	54"X18"



DESIGN	J. RACHAL	PARISH	RAPIDES	SHEET NUMBER	11
CHECK	J. LACHNEY	CONTROL SECTION	417-02	DATE	
DETAIL	J. FLUQUA	REVIEW		PROJECT	H-015266
REVISION	J. RACHAL	REVISION NO	2 OF 3	DATE	

90% PRELIMINARY PLAN
PRELIMINARY
 NOT FOR CONSTRUCTION
 ENGINEER:
 Jason G. Rachal
 LICENSE #:
 30920
 DATE:
 4/27/2023

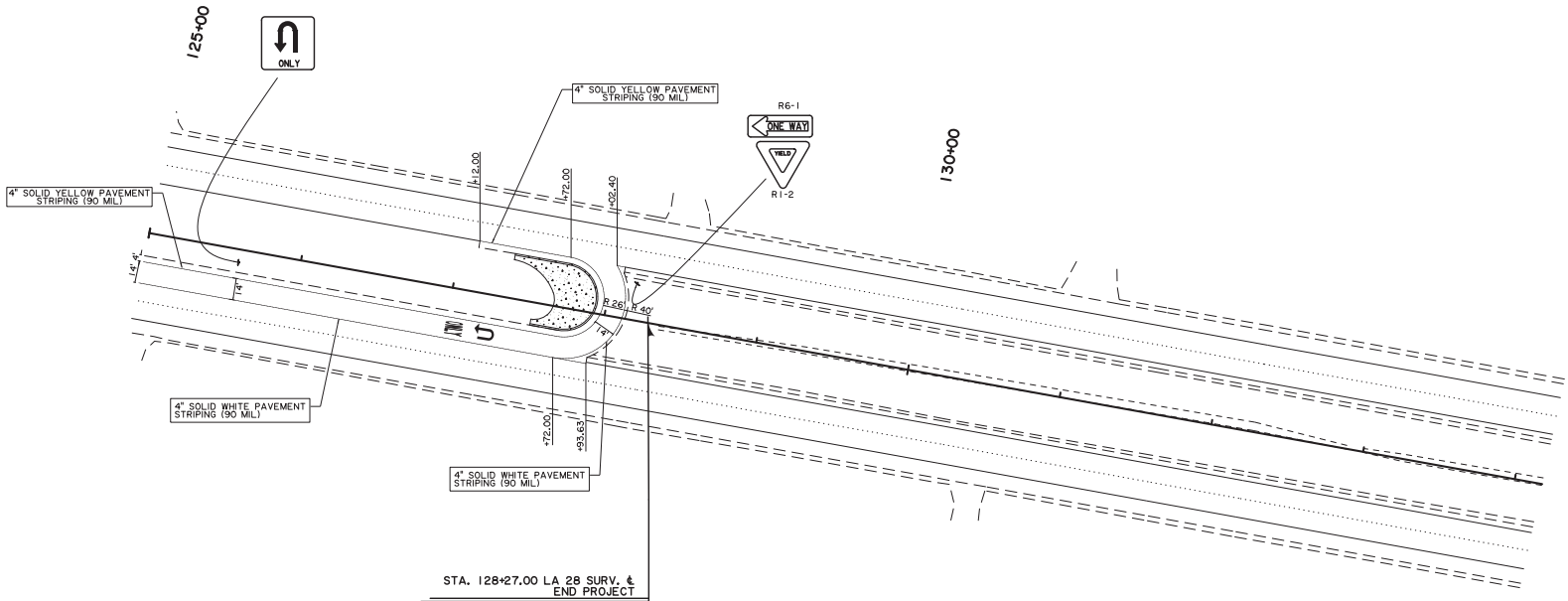
NO.	DATE	REVISION OR CHANGE ORDER DESCRIPTION

PAVEMENT MARKING LAYOUT SHEETS

LA 28: R-CUT AT ST. CLAIR RD.

LOUISIANA DEPARTMENT OF TRANSPORTATION & INFRASTRUCTURE

DIST 08
DESIGN



STA. 128+27.00 LA 28 SURV. & END PROJECT


PERMANENT SIGNING


SIGN CATALOG NUMBER	DESCRIPTION	SIZE
R5-1	DO NOT ENTER	30"X30"
R1-2	YIELD	36"X36"X36"
--	U-TURN ONLY	24"X24"
R6-1	ONE WAY	54"X18"

DESIGN	J. RACHAL	PARISH	RAPIDES
CHECK	J. LACHREY	CONTROL SECTION	417-02
DETAIL	J. FLUQUA	PROJECT	H-015266
CHECK	J. RACHAL	SHEET NUMBER	12
REVIEW	REVISION # 3 OF 3		

90% PRELIMINARY PLAN
PRELIMINARY
 NOT FOR CONSTRUCTION
 ENGINEER:
 Jason G. Rachal
 LICENSE #:
 30920
 DATE:
 4/27/2023

NO.	DATE	REVISION OR CHANGE ORDER DESCRIPTION


PAVEMENT MARKING LAYOUT SHEETS
 LA 28: R-CUT AT ST. CLAIR RD.


 DIST 08 DESIGN